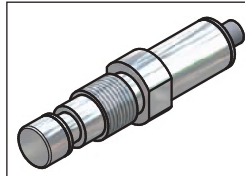
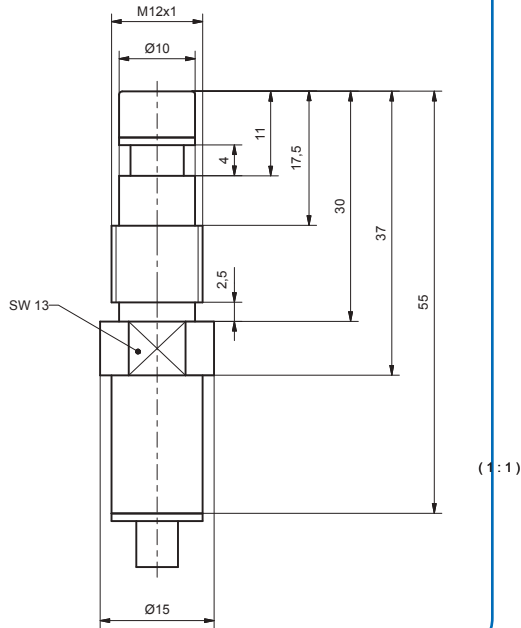


- Oil pressure resistant up to 500 bar
- High-temperature range -40 °C...+110 °C
- $S_n = 2.2$ mm, flush mountable

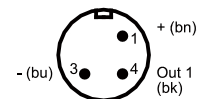
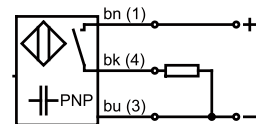
Dimensions



 Anzugsdrehmoment max. 10 Nm



Connection diagram / Pin configuration



Technical data

Installation		flush mountable
Nominal sensing distance S_n	mm	2,2
Effective operating S_r	%	± 10
Repeatability	%	≤ 5
Hysteresis	%	≤ 15
Temperature drift	%	≤ 10
Ambient temperature sensor	°C	-40...+110
Ambient temperature cable	°C	-40...+90

Mechanical data

Dimensions sensor D x T	mm	M12x1 x 55
Housing material		Stainless steel
Front cap		Stainless steel
Pressure resistance	bar	≤ 500
Protection class		IP 69K
Connection		200 mm cable LIFY11Y 3x0.34 mm ² male connector M12 3-pin

Electrical data

Current		DC
Wiring		3-wire
Type of switch		NO
Switching output		PNP
Rated supply voltage	V	24 DC
Operating voltage	V	6...35 DC
Residual ripple	%	≤ 10
Switching frequency	Hz	400
Output current max.	mA	200
No load current	mA	≤ 13
Off-state current	mA	$\leq 0,01$
Voltage drop	V	$\leq 2,4$
Overload protection		yes
Short circuit protection		yes
Polarity protection		yes

Type: IHP-2,2-12BPS-ST4-0,2